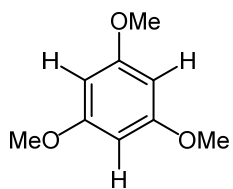
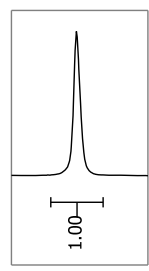
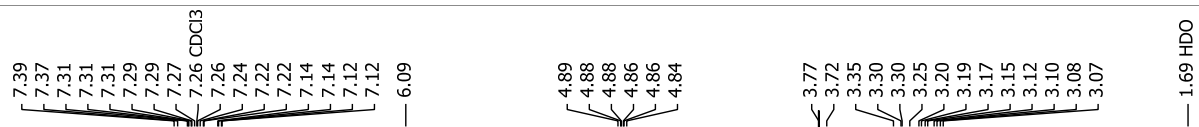
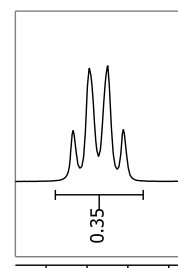
**2**

+

$$\frac{16.57 \text{ mg} \times 279.3 \text{ g/mol} \times (0.35/1\text{H}) / (1.00/3\text{H}) \times 0.997}{28.72 \text{ mg} \times 168.2 \text{ g/mol}} \times 100 = 100\%$$

6.10 6.05  
f1 (ppm)4.88 4.80  
f1 (ppm)